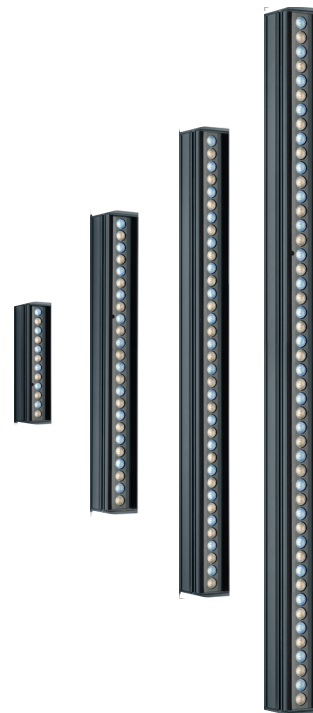


## DESCRIPTION

PARADE L linear luminaires are available in one-foot increments up to four feet overall length. Each model features premium quality high brightness LEDs and a comprehensive selection of ten light distributions. Adjustable brackets are available in three standard lengths. Standard built-in programming capabilities include economical stand-alone operation or master-satellite configurations without the use of external control systems, or operation by remote DMX512 control systems. Four standard finishes are available with options for marine-grade or custom RAL finishes on request. All hardware is stainless steel.



Date: \_\_\_\_\_ Type: \_\_\_\_\_ Catalog Number: \_\_\_\_\_

Project Name: \_\_\_\_\_

## ORDERING INFORMATION

LUMINAIRE							
MODEL	CCT	CONTROL	CABLE	VOLTAGE	OPTIC	FINISH	OPTION
<b>PDL1</b> Parade L1 - 1' Length	<b>DW</b> Dynamic White (2700K to 6500K)	<b>DMX-RDM</b> DMX-RDM	<b>M</b> Monocable Without Connectors (19.7")	<b>UNV</b> 120-277v	<b>SP</b> Spot 8°	<b>AG</b> Anthracite Grey	<b>AST</b> Anti-Saline Treatment
<b>PDL2</b> Parade L2 - 2' Length		<b>DIM</b> 0-10v Dimming <sup>1</sup>	<b>C</b> Monocable With Connectors (19.7")		<b>NB</b> Narrow 12°	<b>BL</b> Black	<b>LVR</b> Honeycomb Louver
<b>PDL3</b> Parade L3 - 3' Length					<b>MB</b> Medium 26°	<b>SG</b> Griven Silver Grey	
<b>PDL4</b> Parade L4 - 4' Length					<b>WB</b> Wide 40°	<b>WH</b> White	
<b>PDL1PE</b> Parade L1 Polar Edition - 1' Length					<b>EW</b> Extra Wide 58°	<b>CC</b> Custom RAL Color	
<b>PDL2PE</b> Parade L2 Polar Edition - 2' Length					<b>ELH</b> Elliptical 42° x 11°		
<b>PDL3PE</b> Parade L3 Polar Edition - 3' Length					<b>ELWH</b> Elliptical Wide 40° x 24°		
<b>PDL4PE</b> Parade L4 Polar Edition - 4' Length					<b>WW</b> Wall Wash 36° x 15° (5° Incline)		

<sup>1</sup>Dimming is available only on 1', 2', and 3' lengths.

Custom options are available; consult factory for assistance via phone at (864) 487-3535 ext. 258 or via email at DesignServices@EXP-Brands.com.

See Page 4 for ordering information of available and required accessories.



		PARADE L1	PARADE L2	PARADE L3	PARADE L4
PHYSICAL	HOUSING	Extruded Aluminum			
	LENS	Tempered Glass			
	DRIVER LOCATION	Integral			
	DIMENSIONS	12 5/8" L x 3 3/4 W x 3" H	24 1/8" L x 3 3/4 W x 3" H	36 1/8" L x 3 3/4 W x 3" H	48 1/8" L x 3 3/4 W x 3" H
	WEIGHT	4 Pounds	6.2 Pounds	9.7 Pounds	12.4 Pounds
	OPERATING TEMPERATURE	-40°F to 122°F (-40°C to 50°C)			

ELECTRICAL	INPUT VOLTAGE	Universal 120 to 277 Volts			
	POWER CONSUMPTION	19 Watts	38 Watts	56 Watts	76 Watts
	CURRENT	0.16 Amps at 120 Volts 0.07 Amps at 277 Volts	0.32 Amps at 120 Volts 0.14 Amps at 277 Volts	0.46 Amps at 120 Volts 0.20 Amps at 277 Volts	0.63 Amps at 120 Volts 0.27 Amps at 277 Volts
	CONTROL	DMX-RDM / 0-10v Dimming (1', 2', 3' models only)			
	CABLE	19.7" Monocable			
	CONNECTION KIT	GRIVEN-CON-KIT-8287			

PHOTOMETRIC	LED	Dynamic White (2700K to 6500K)			
	CRI	70 (Cold White), 80 (Warm White)			
	LUMEN MAINTENANCE	L70 > 100,000 Hours at 77°F*			
	PHYSICAL AIMING	+/- 90°			

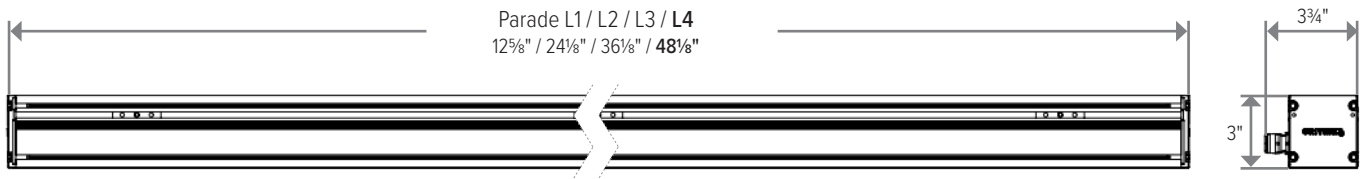
			PARADE L1		PARADE L2		PARADE L3		PARADE L4	
LIGHT DISTRIBUTIONS	DISTRIBUTION	BEAM ANGLE	LUMENS	EFFICACY	LUMENS	EFFICACY	LUMENS	EFFICACY	LUMENS	EFFICACY
	SPOT	8°	2221	117	4220	111	4957	89	8663	114
	NARROW	12°	2038	107	3872	102	4565	82	7948	105
	MEDIUM	26°	2000	105	3800	100	4480	80	7800	103
	WIDE	40°	1929	102	3665	96	4321	77	7523	99
	EXTRA-WIDE	58°	1594	84	3029	80	3571	64	6218	82
	ELLIPTICAL	42° X 11°	1850	97	3515	93	4144	74	7216	95
	ELLIPTICAL WIDE	40° X 24°	1625	86	3514	92	4143	74	7214	95
	WALL WASH	36° X 15° (5° INCLINE)	1768	93	3358	88	3959	71	6894	91

CERTIFICATIONS	SAFETY	ETL Certified for Wet Locations			
	INGRESS PROTECTION	IP67			
	IMPACT RATING	IK09	IK10	IK09	IK10
	WARRANTY	Five Year Limited Warranty			

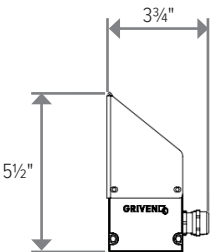
\* LED life may vary under actual field conditions due to external factors. Lifetime estimates are generated from actual testing in a controlled environment. Values are conservatively derived from those numbers.

DIMENSIONS

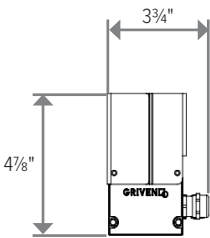
All dimensions are shown in inches unless otherwise noted.



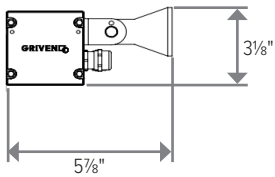
ACCESSORY DIMENSIONS



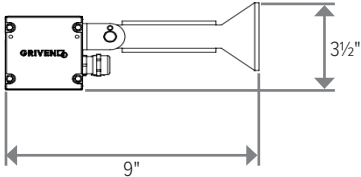
Parade with Visor



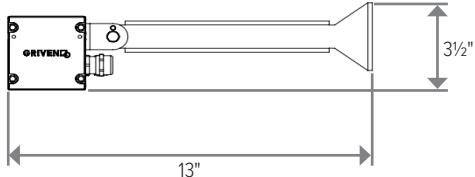
Parade with Snoot



Parade with 3" Mount



Parade with 6" Mount



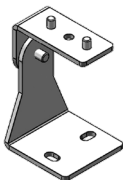
Parade with 10" Mount

ACCESSORIES

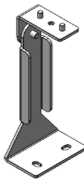
NOTE: Accessories are ordered and shipped separately from luminaire for field installation.



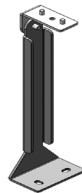
**IR-CONFIG-REMOTE**  
Infrared DMX Configuration Remote



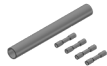
**PDL-BRKT-3IN**  
3" Mounting Brackets (2)



**PDL-BRKT-6IN**  
6" Mounting Brackets (2)



**PDL-BRKT-10IN**  
10" Mounting Brackets (2)



**GRIVEN-CON-KIT-8287**  
Connection Kit for "M" Cable Type

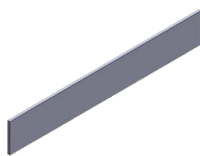


Visor



Snoot

See ordering information below.



Honeycomb Louver

Additional Control and Installation Solutions are available online; [click here to view available options.](#)

ORDERING INFORMATION

PAINTED ACCESSORIES		
MODEL	ACCESSORY	FINISH
<b>PDL1</b> Parade L1	<b>VISOR</b> Louver	<b>AG</b> Anthracite Grey
<b>PDL2</b> Parade L2	<b>SNOOT</b> Snoot	<b>BL</b> Black
<b>PDL3</b> Parade L3	<b>LVR</b> External Honeycomb Louver	<b>SG</b> Griven Silver Grey
<b>PDL4</b> Parade L4		<b>WH</b> White
		<b>CC</b> Custom RAL Color

ORDERING INFORMATION

UNPAINTED ACCESSORIES	
MODEL	
<b>IR-CONFIG-REMOTE</b> Infrared DMX Configuration Remote <sup>1</sup>	
<b>PDL-BRKT-3IN</b> Parade Mounting Brackets, Set of 2, 3" Height	
<b>PDL-BRKT-6IN</b> Parade Mounting Brackets, Set of 2, 6" Height	
<b>PDL-BRKT-10IN</b> Parade Mounting Brackets, Set of 2, 10" Height	
<b>GRIVEN-CON-KIT-8287</b> Connection Kit for "M" Cable	

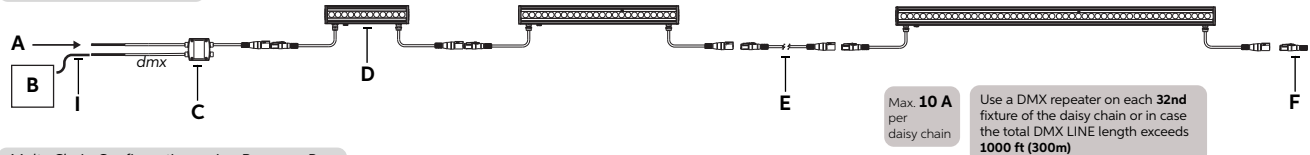
<sup>1</sup>Unless an RDM compatible control is used, one IR-CONFIG-REMOTE must always be purchased with one or more DMX/RDM luminaires in order to access DMX addressing.

## CONTROL OPTIONS (DMX512, PRIMARY CONTROL PLATFORM)

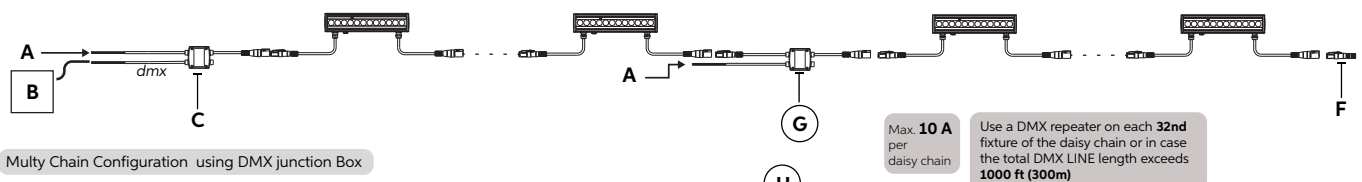
Contact manufacturer for control system development.

Copyright © 2020, GRIVEN S.r.l World Lighting Challenge - www.griven.com

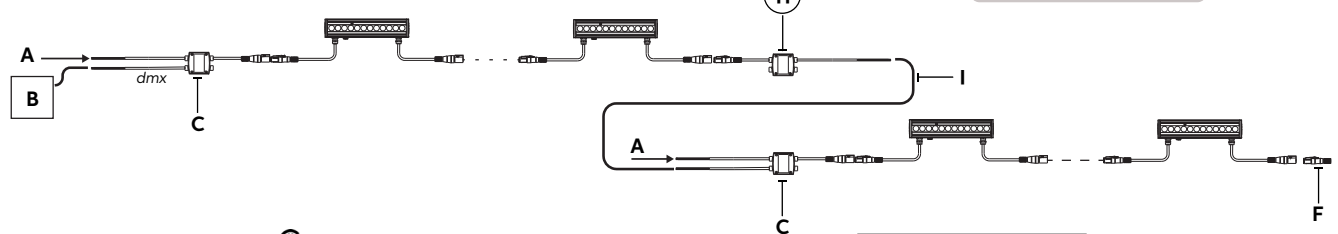
Single Chain Configuration



Multy Chain Configuration using Repower Box



Multy Chain Configuration using DMX junction Box



A - Power Input CE ver. 220-240 Vac - ver. 120 & 277 Vac  
B - DMX/RDM Controller  
C - Start Line Box - AL5058C with connectors / AL5058M without connectors  
D - Parade L-1, L-2, L-3, L-4, L-2 Recessed, L-3 Recessed  
E - Connection Cable - AL8264 L=1m AL8265 L=2m AL8266 L=3m AL8267 L=5m AL8268 L=10m  
F - DMX Terminator - AL5169  
G - Repower Box - AL5167C with connectos / AL5167M without connectors  
H - DMX Junction Box - AL5059C with connectors / AL5059M without connectors  
I - DMX Cable - AL0512

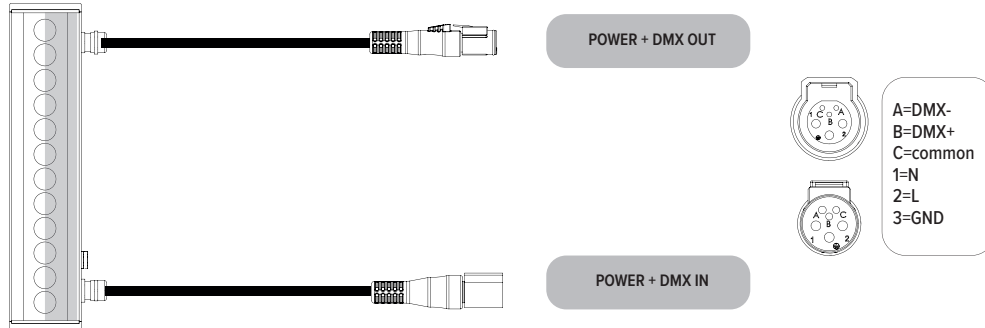
CE Colours	USE
Brown	Live
Blue	Neutral
Yellow/Green	Ground
Red	DMX Data +
Black	DMX Data -
White	DMX GND

### NOTES:

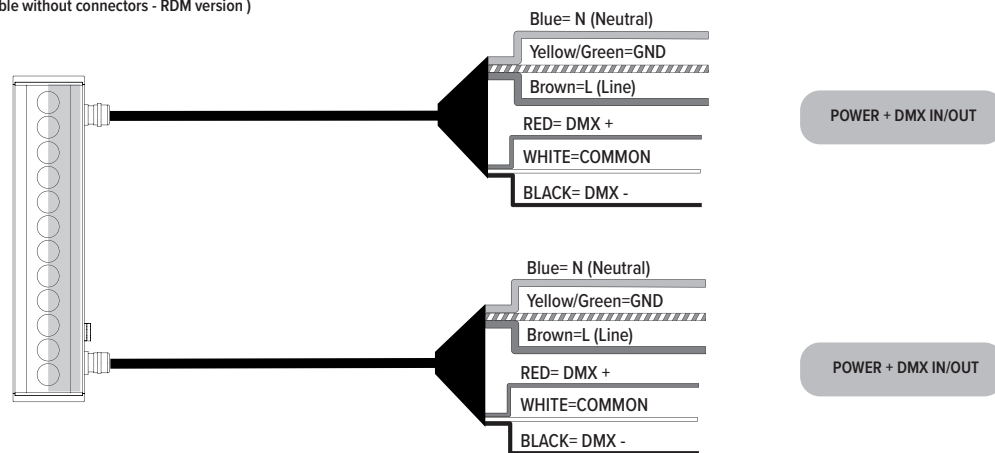
- Wire specifications are available from factory as well as approved wire for purchase.
- Other control protocol solutions available. Contact factory for more information.
- Wireless components are external to fixture. Distance limitations based on antennas chosen and site conditions. Contact factory for more information.
- Based on maximum of 32 fixtures per run as well as any site constraints on conveyance of data.
- For example: Lutron, Crestron, Encelium, Douglas, ETC by others. Griven control system will interface with building lighting control system.
- Local wall controller for small applications. Wall controllers specified separately for larger systems.
- Contact factory for assistance with specification. Onsite commissioning by Griven of control system is required.

## CONNECTIONS

"C" Type cable ( Monocable + connectors )



"M" Type cable ( Monocable without connectors - RDM version )



## CUSTOMIZE YOUR **EX**PERIENCE.

At Experience Brands, we believe every space deserves unique lighting elements. We proudly specialize in crafting solutions that reflect your personal vision. Our expert team is here to collaborate with you to design and implement customized features that elevate your environment.

**Ready to Get Started?** Email us at: [DesignServices@exp-brands.com](mailto:DesignServices@exp-brands.com)